

ED/EDS 2044 N3/P3 · ED/EDS 3044 N3/P3



Illustration shows ED 3044 with DV 4431 and ED 2044 with DV 4426

## DC Dimmer / Voltage Regulator

**24V**

**Faceplate mounting**

**Version with switch available**

## ED/EDS 2044 N3/P3 · ED/EDS 3044 N3/P3

### Description

ED series dimmers are electronic dimmers for faceplate mounting. The voltage at the output of the dimmer is set via a potentiometer. By means of a regulating unit the voltage is maintained at the set value independently of any fluctuations in the supply and any variations in the load. This guarantees a flicker-free brightness setting for the connected lamps. The dimmers are suitable for both operation with filament bulbs as well as for LEDs with series resistors.

The dimmers are offered in two power stages and for operation in the positive or negative arm of the load circuit. There are also integrated limit switches for all models. The standard output voltage range is 3 to 24 Volts.

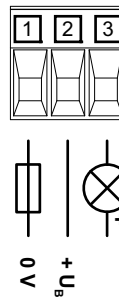
By means of a selection of adapters, different design variants are available for installation. All adapters feature the protection class IP65.

Use the N type for loads with a common minus, and the P type for loads with a common plus.

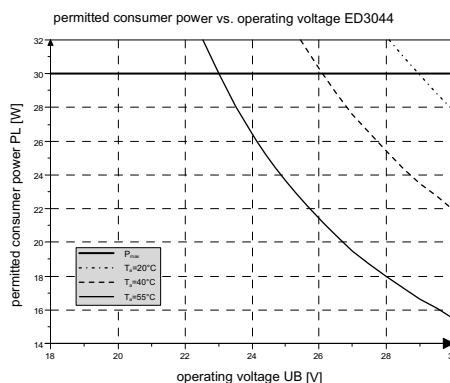
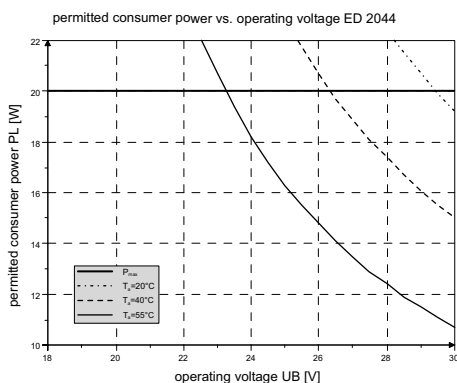
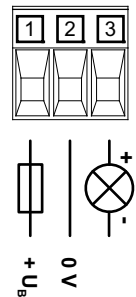
### Electrical Specification

<b>Nominal Voltage:</b>	24 VDC - 30% + 25%	
<b>Operating Voltage:</b>	16,8 - 30 VDC	
<b>Output Voltage :</b>	max. 24 VDC ± 3% min. 3 VDC ± 3% (other values upon request)	
<b>Consumer Power:</b>	ED/EDS 2044 ED/EDS 3044	$P_L=20W$ $P_L=30W$
<b>Ambient Temperature:</b>	operation: storage:	$T_a=-25^{\circ}C$ bis $+55^{\circ}C$ $T_s=-40^{\circ}C$ bis $+70^{\circ}C$
<b>Connector:</b>	3 pin plug with screw terminals  fine strands: 2,5mm <sup>2</sup> solid: 2,5mm <sup>2</sup>	
<b>Recommended Fuse:</b>	1,25 A slow blow	

#### Negative Dimmer ED/EDS xx44.Nx



#### Positive Dimmer ED/EDS xx44.Px



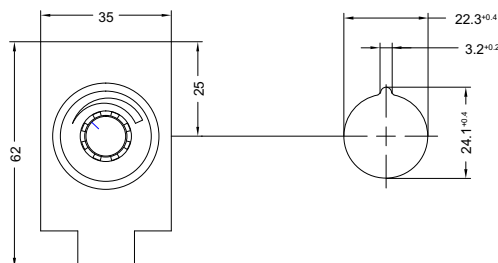
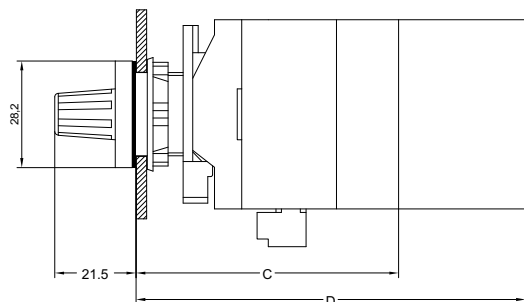
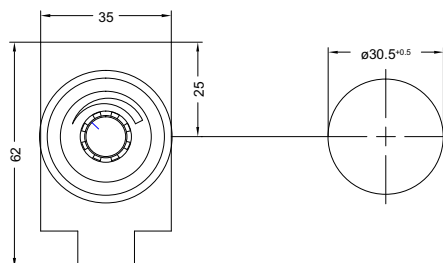
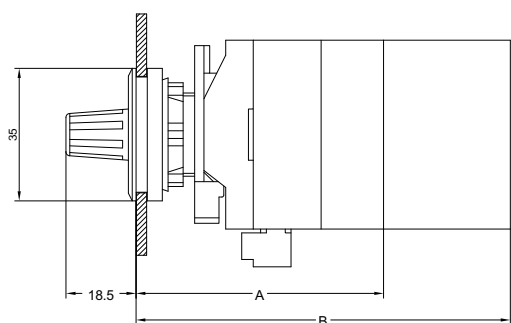
## ED/EDS 2044 N3/P3 · ED/EDS 3044 N3/P3

### Mechanical Specification

<b>Mounting:</b>	Locking connector / Mounting hole	
<b>Protection:</b>	class IP 65 front by using DV facing elements	
<b>Wight:</b>	ED 2044	0,095 Kg
	ED 3044	0,140 Kg
	EDS 2044	0,100 Kg
	EDS 3044	0,150 Kg
	DV 442x	0,016 Kg
	DV 443x	0,022 Kg

Mounting Depth	DV 443x	DV 442x
ED 2044	A = 66 mm	C = 63 mm
ED 3044	B = 99 mm	D = 96 mm
EDS 2044	A = 73 mm	C = 70 mm
EDS 3044	B = 106 mm	D = 103 mm

### Mounting Hole



For the mounting of the dimmer, a facing element of the DV series is required.

## ED/EDS 2044 N3/P3 · ED/EDS 3044 N3/P3

### Ordering Information

Module	Type	Voltage Regulation
ED 2044 N3	negative	3 up 24 VDC, other values on request
ED 2044 P3	positive	
ED 3044 N3	negative	
ED 3044 P3	positive	
EDS 2044 N3	negative with switch	
EDS 2044 P3	positive with switch	
EDS 3044 N3	negative with switch	
EDS 3044 P3	positive with switch	

Facing Elements	Design	Dimension
DV-4420	plastic black	Ø28mm
DV-4422	plastic silver	Ø28mm
DV-4426	plastic grey	Ø28mm
DV-4430	aluminium black	Ø35mm
DV-4431	aluminium silver	Ø35mm

Equipment	
DV-4400	mounting tool for facing elements

### Standards and Guidelines

These products conform with the following standards and guidelines:  
Railway standard, electromagnetic compatibility  
EN 50121-3-2:2016

Tolerable functional impairments related to the evaluation criterion A of the product standard:  
A flickering or changing in brightness of the connected luminous elements is possible for the duration of the interference.