

Product description foil front panels



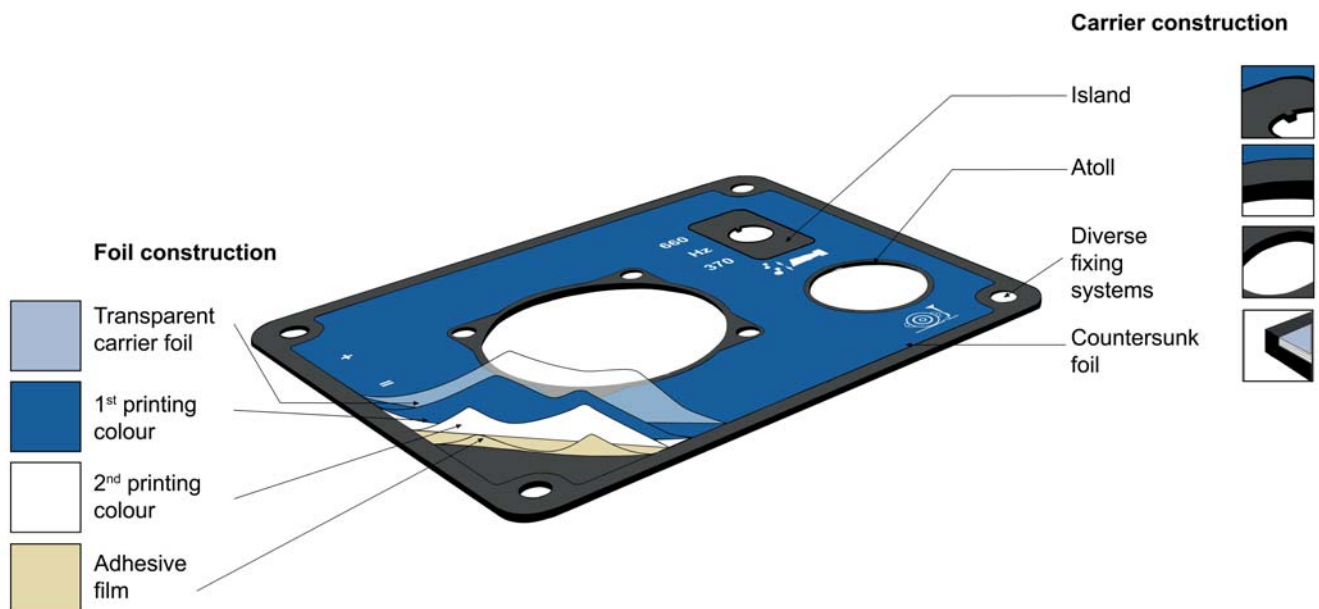
Product description foil front panels

Description

Our Petalox front panels are custom made and based on an aluminum-polyester composite. The combination of an aluminum backplate and a polyester film as the printing medium results in optimum features in terms of ergonomics, durability and cost-effectiveness of a front panel.

The plastic surface offers warm skin contact, full color selection and excellent lettering.

We integrate Braille or tactile elements in public sector applications. A wide range of technology and design options enables fast implementation of individual solutions.



The polyester foil is antireflex-coated for a good visibility of the lettering. The surface appears pleasantly warm when touched by the low thermal conductivity of the plastic film. The film surface is scratch resistant and resistant to many chemicals such as diesel fuels.

The graphic layout is transferred to the foil in a multi-color screen printing process. The printing is done in high resolution, so even complex symbols and small fonts can be printed. The printing is done on the back, which protects the color layers from environmental influences.

The foil is laminated to the aluminum substrate with a strapless adhesive film. This bond is so strong that the foil can only be released under the action of high forces. For absolute durability, the foil can be embedded in the aluminum backplate. This also protects the edges. In addition, carrier material is left in the area of the installation recess to give the built-in appliances better support and to protect the film from stresses during installation.

The surface of the aluminum backplate is refined by electrolytic application of an oxide layer. The layer is electrically insulating, increases the surface hardness of the material and is more resistant to weathering and chemicals. It can be produced in a number of different colors, with black and natural matt as standard.

The aluminum backplate offers many possibilities for attaching the front panels, such as mounting holes or extruded bolts, which are covered by the film.

Product description foil front panels

Technical data

Backplate

| | |
|-----------|--------------------|
| Material | Aluminium AlMg3 |
| Dimension | max. 1000 x 700 mm |
| Thickness | min. 2 mm |

Foil

| | | |
|---------------------------|-----------|--------------------|
| Material | Polyester | |
| Thickness | 0,175 mm | |
| Ball indentation hardness | 150 MPa | ISO 2039-1 H358/30 |
| Shore hardness | D83 | ISO 868 |

| | | |
|--------------------|-----------|-------------------|
| Temperature | Storage | -40°C up to +70°C |
| | Operation | -25°C up to +55°C |

| | |
|---------------|------------------------|
| Colour | according to RAL table |
|---------------|------------------------|

Standards and Guidelines

Classification according to DIN EN 45545-2:2013-08

Versions are available for the requirement set R2 and the hazard level HL2.